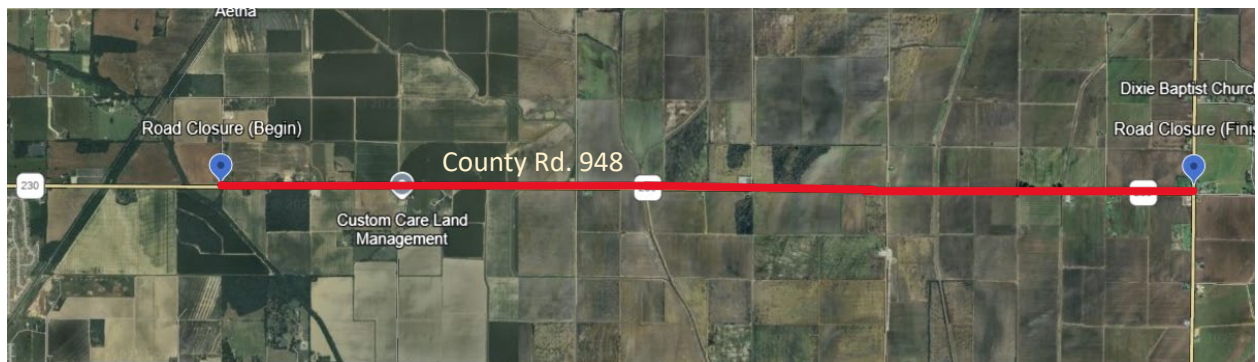


Road Closure of CR 948

RELEASE DATE: March 6, 2025

County Judge's Office



Craighead County Road-Highway Department will close CR 948 Hwy, between CR 943 and AR Hwy 135 North, on Monday, March 10, 2025, at 7:00 A.M. for Bridge Construction.

The project timeline is set for four weeks or until completion, depending on weather conditions.

Detour signs will be posted to alert the public, and motorists are asked to use caution in the area. Commuters should allow for additional travel time. The road closure is also posted on the home page at <http://www.craigheadcountyar.gov> under Road/Bridge Closures.